



Steel
Container
Systems INC.

TUB STYLE ROLL OFF CONTAINER



STANDARD FEATURES

AWS Welding Standards

Our AWS welding procedures guarantee exceptional weld quality. Eliminate breakdowns and reduce the overall life-cycle maintenance costs.

Double Tapered Sides

Double tapered sides allow you to stack up to 5 bins together! Stacking bins provide efficient transport or storage solutions.

Formed Floor and Back Posts

Provide improved structural strength and reduce the overall weight.

SCS Drop Forged Hinges

Heavy duty drop forged cast steel door hinges with grease fitting ensures an easy open door.

PRODUCT HIGHLIGHTS

- 6 – 24 cubic yard sizes
- 10' – 16' lengths
- Can be stacked up to 5 high for shipping



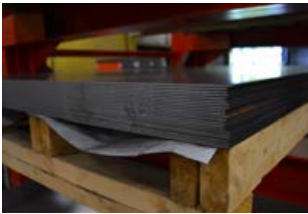
SCS CONTAINERS HAVE AN INDUSTRY LEADING 3-YEAR PARTS AND LABOR WARRANTY

SPECIFICATIONS

- Hook lift Main rails 5" x 2" x 3/16" steel tube
- Cable pull Main rails 5" x 2" x 3/16" steel tube
- Cross members 3" x 3" x .120" formed Hi-tensile channel on 18" centers
- Door frame 4" x 3" x .120" Hi-tensile channel
- Walls, door and front sheet, 12 GA Hot rolled sheet
- Floor 10 GA hot rolled sheet, formed
- Rear post - formed 3/16" HR plate
- Front rail 3" x 3" x 1/8" steel tube. 4" x 3" x .125" steel tube on containers over 14' long
- Side rails 3" x 3" x 1/8" steel tube. 4" x 3" x .125" steel tube on containers over 14' long
- Landing gear (wheel mount) 6" x 3" x 3/16" Hi-tensile formed channel
- Hinges – Heavy duty dropped forged with grease fitting.
- ANSI 245.30-2008 Compliant Latch
Carnegie Latch or Turn Buckle Ratchet Latch
- Wheels
5" standard pipe with 1-1/4" extra heavy pipe hubs and 1-3/16" cold rolled shaft
All wheels have full length hubs for axle support and mount to the landing gear cross member with 3/8" formed steel plate
- Welding
Inner and outer floor seams, front and rear wall seams and inside top rail seams are continuous welds
- Painting
Two coats of anticorrosive primer on all exterior surfaces
Two coats of industrial enamel paint in any single color

SCS bins are manufactured to the highest quality standards. This reduces maintenance costs & increases productivity.

AVAILABLE OPTIONS



10 Gauge Steel

Increase the strength and durability of your bin with 10 gauge steel or a 3/16" wall, front & door sheet.



Bin Roof or Lid

Tailor the bin to your specific application! We offer a fixed roof or hydraulic lid with access hatches as well as an available sealed rear door.



Dual Purpose

SCS Roll Off Bins can be fit for any under structure hook lift, cable, live roll, bail hook (Dempster) or dual purpose system.



Job Specific Customization

Work with our design team to create a bin that meets your specific needs.

TOLL FREE: 1 (877) 727-7833 | EMAIL: SALES@SCSINC.COM
FOR MORE PRODUCT INFORMATION VISIT SCSINC.COM



Steel Container
Systems INC.